

APPENDIX Q

General Notes of the Meeting

For any line changes, GPC would need to pay the consultation fees, currently £3300 approx. But all changes could be addressed in one consultation.

OCCH would be looking for 50% match funding for the works from the PC.

OCCH Confirmed they were responsible for enforcement now on anything which has a “Traffic Order” on it.

Need to be wary of any action because of the “displacement effect”, if you remove parking from one place, the parking will need to happen somewhere else.

Going forward

STEP1 – to formalise what changes we want to make

STEP2 – Village informative (MH – OCCH - to help write)

STEP3 – “Beef Up” enforcement to go with the informative and new changes.

New consultations cannot launch until after Easter due to current work streams.

Lockstile Way

To Add Double Yellow Lines



To Add Single Yellow lines, Mon-Fri
restricted 10-11am and 3-4pm opposite
sides of the road.



Station Road / Upper Red Cross Road

Renew / Check / Repaint Double Yellows.



Appendix A

Croft Road

Reduce the length of double yellows, add times parking bays to account for the removal of bays on Station Road.



Manor Road

Reduce the length of double yellows, add
timed parking bays, 2 hours all week?



Appendix A

Manor Road Continued

Better signage? Definition?



Appendix A

Thames Road

2 Hour Bays, plus single yellow

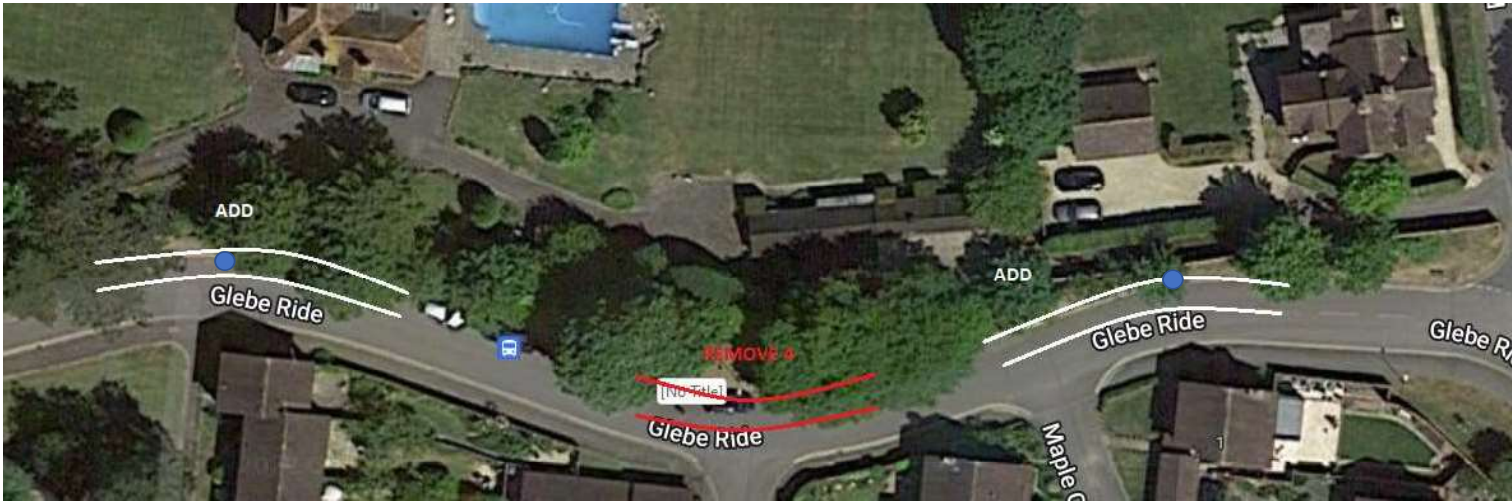


Appendix A

Glebe Ride

Add more spaces, remove some in the middle.

● Potential EV Spaces



Cleeve Road

Full Length, Monday – Friday 2 hour Restriction, 10am – 3:30pm



Monday – Friday 2 hour Restriction, 10am – 3:30pm, switch double yellows to single with 1 hr parking restriction.

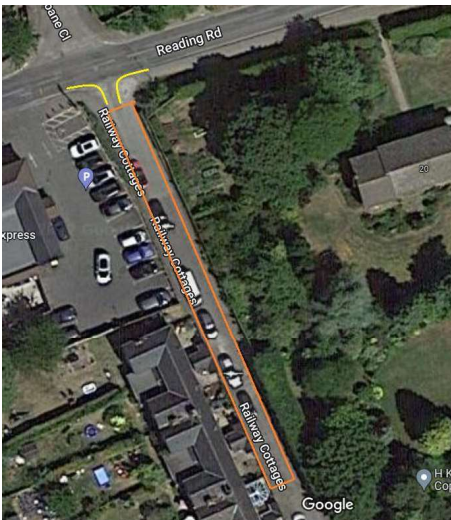


Appendix A

Railway Cottages

Extend double yellows around the corner.

Consider PERMIT parking, this would attract an annual fee for the residents who want a permit – but need to find out who the owner is [ACTION RO], and if residents would consider it. Could just be permitted for 1 hour in the middle of the day, to stop all day parkers.



OCCH would manage the permit scheme, but may look favourably on keeping the permit at a low cost if the scheme only ran for approx. 1hour per day.

Indicative Sign



Other matters not relating to changing the lines.

Upper Red Cross Road
Private Access Protection Road Markings

Upper Red Cross Road

This yellow line to be investigated further by OCCH, including location of the official highway boundary. Subject to location of the boundary, this location may need significant vegetation clearance / sweeping and remarking of the yellow line at the actual boundary.



Private Access Protection Road Markings

An example of a Private Access Protection Road Marking is indicated in the picture.

Full details can be found here:

<https://www.oxfordshire.gov.uk/residents/roads-and-transport/street-maintenance-z/private-access-markings>

In summary:

- Paid for by residents
 - £153 inc, VAT, covers installation and maintenance.
- Have no legal significance, but experience elsewhere has shown these markings are respected by the majority of road users.
- First Step, Contact the Highway Enquiry Team with a sketch and exact location so they can assess feasibility.



Appendix A