

<b>Title</b>	Sheffield Bike Stands – Throughout the Village- Proposal to Council.
<b>Authors</b>	Assistant Clerk
<b>Meeting</b>	Traffic Management Parking and Pedestrian Safety Committee – 15 <sup>th</sup> August 2023

The village is sorely lacking in highly visible and secure locations to which bikes can be chained. Subsequent to 6 locations being chosen in the last meeting of the TMPPS Committee, a representative of Oxfordshire County Council Highways Department has met with a Committee Member to discuss the proposals. The Following was discussed:

Example of a stand:



1. [GPC] Gardiner Pavilion – 2-off stands on the unused hard standing outside water tank garage door.
2. [OCC] High Street – 1-off stand on the traffic calming build out, outside the arcade.
3. [GVH] Goring Village Hall – 1-off stand on to the right of the building, at the front.
4. [OCC] Corner of High Street & Manor Road – 1-off stand on the wide paved section outside the entrance to the Rectory Garden.

OCCH has a supply of Sheffield stands, remaining from previous active travel initiatives, these are to be donated and fitted free of charge.

**[Proposal to Full Council]** To approve installation of 2-off Sheffield Bike stands on the unused hard standing outside the water tank garage door at the Gardiner Pavilion – installation not to foul the doors, and send thanks to OCCH for their agreement to install these at their expense.

Outside of OCCH Scope:

5. [SODC] Wheel Orchard Car Park – repurpose a narrow parking space, potentially twinned with adjacent EV Parking Spaces going forward.

Not Suitable:

6. [OCC] Highstreet – opposite Pierreponts, change part of the barrier to be similar to the bench.

## **Application to OCCH for SIDs throughout the village of Goring**

Subsequent to a village walkabout with an OCCH representative, and implementation of the 20mph limit in the village, this document details the proposed locations of poles/solar panels for 2-off moving SIDs or SLR's

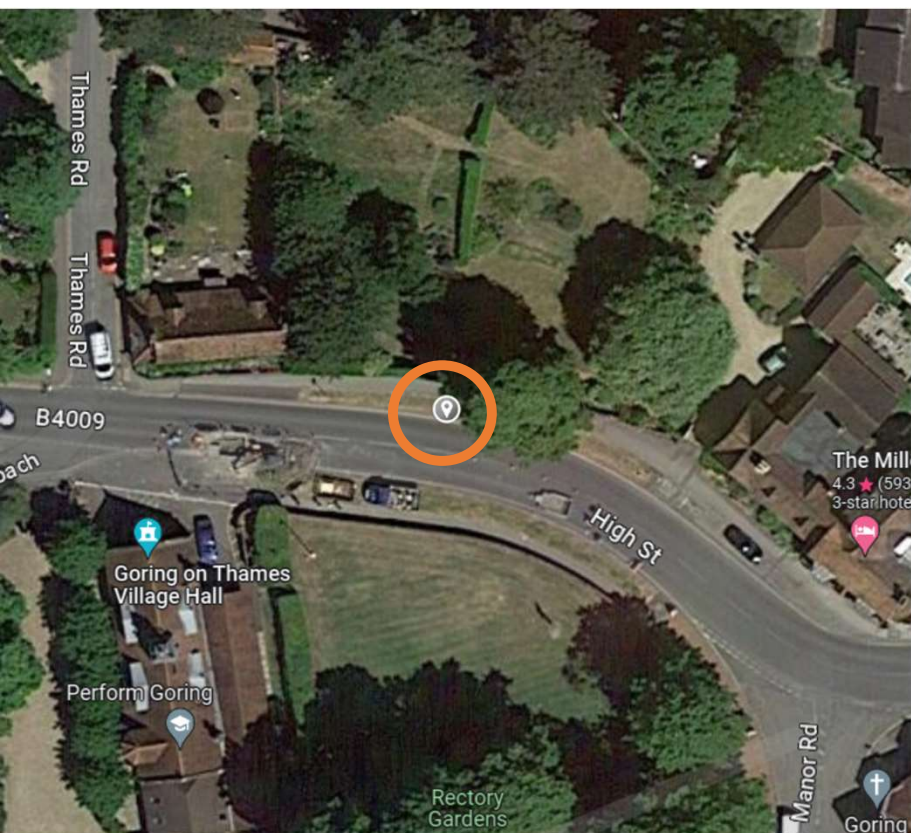
In addition, a resident has asked for a sign near their home in the 30mph zone, they have indicated they may be willing to fund this, but as it will be a 30mph sign, it would not be suitable to move to other locations in the village and would therefore need to be a permanent installation.

**UPDATED 09<sup>th</sup> August 2023 – After 2<sup>nd</sup> walk around with OCCH representative.**

See following pages.

**High Street, west of the Miller of Mansfield, heading toward to the village.**

A new solar powered pole.



**OCC Response:**

Yes I can arrange a new pole etc. and either a mobile 'SID' or permanently mounted 'VAS' could be installed and powered by Solar

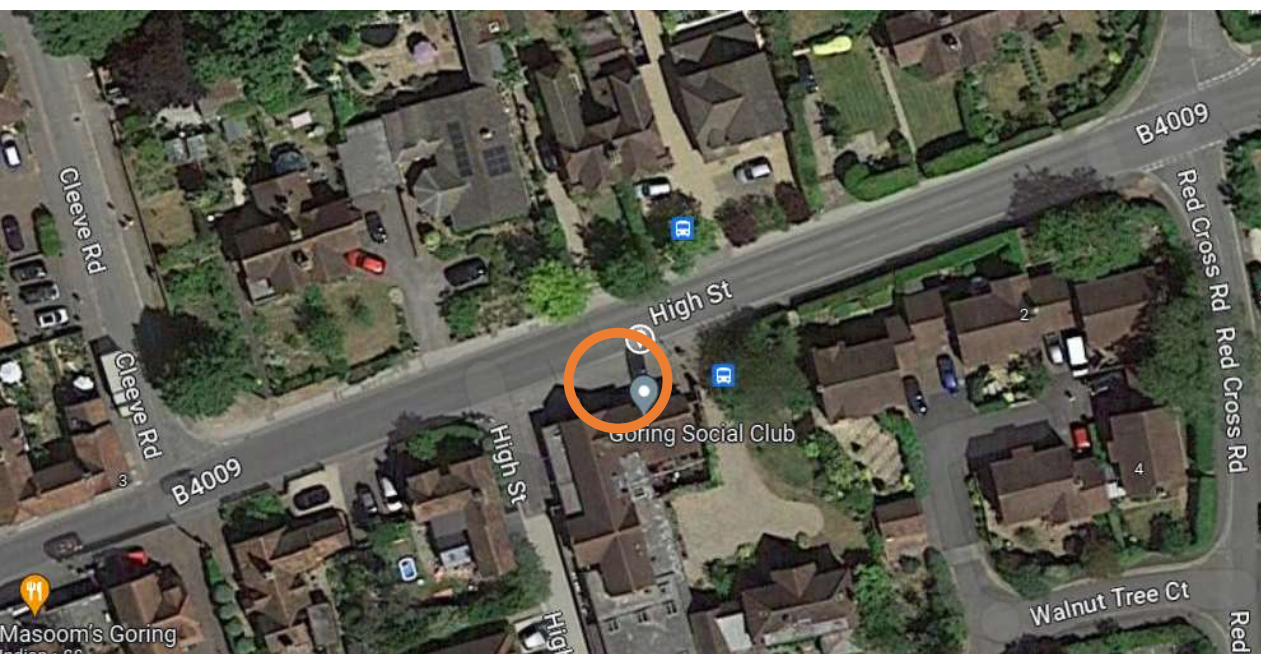
Appendix B



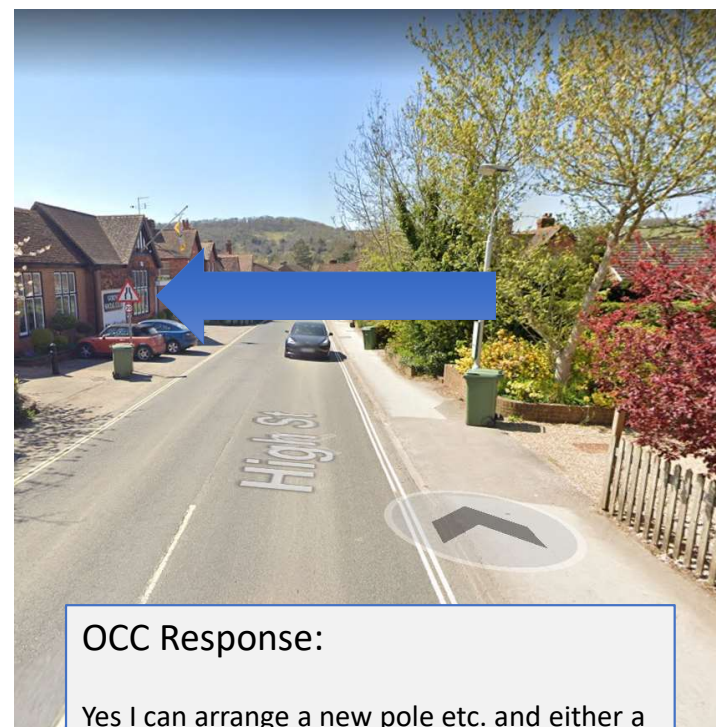
**High Street, Outside Social Club, heading toward village centre.**

Cantilever on current pole:

**UNSURE HOW-TO POWER?**



Appendix B



**OCC Response:**

Yes I can arrange a new pole etc. and either a mobile 'SID' or permanently mounted 'VAS' could be installed and powered by Solar.

Not cantilever / offset bracket, would be vulnerable to being knocked.

## Cleeve Road – North of Entrance to Nuns Acre.

Powered off the Street lamp – with cantilever?



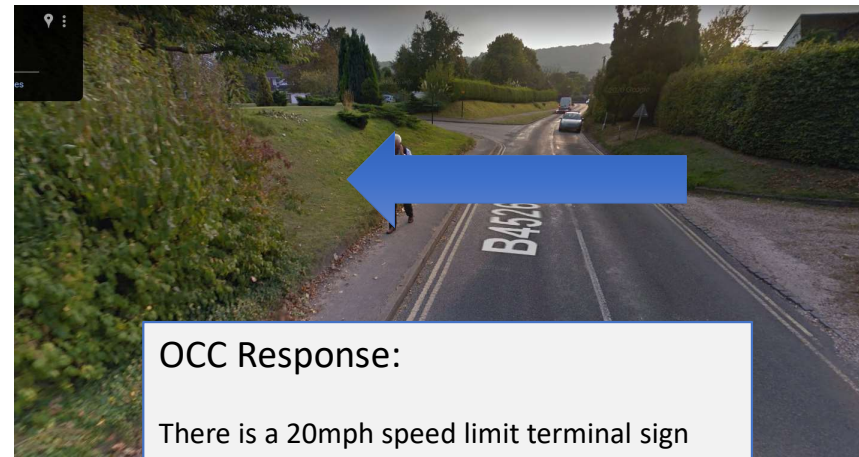
### OCC Response:

Yes 300mm offset bracket to attach to the existing lamp post for either a mobile "SID" or permanently mounted VAS could be installed. If a permanently mounted VAS, could be mains powered, but a mobile "SID" should be battery powered due to H&S considerations of volunteers.



## Reading Road – East of Entrance to Whitehills Green.

New Solar Powered Pole – with cantilever?

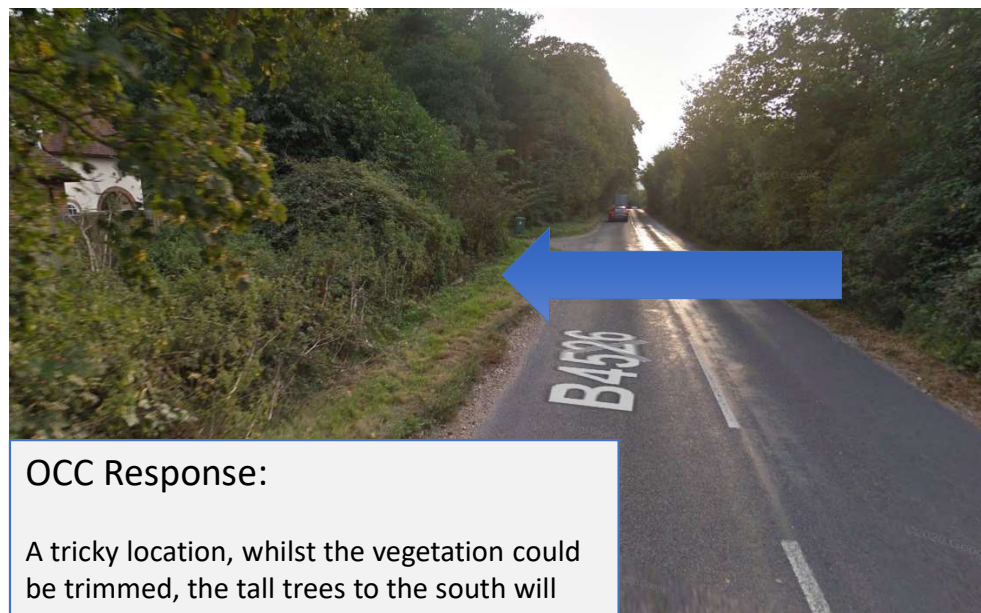


### OCC Response:

There is a 20mph speed limit terminal sign here now, we do not install electronic signs with them.

## Reading Road – Near Burial Ground – 30MPH

Stand alone, solar pole, with 30mph permanent sign.



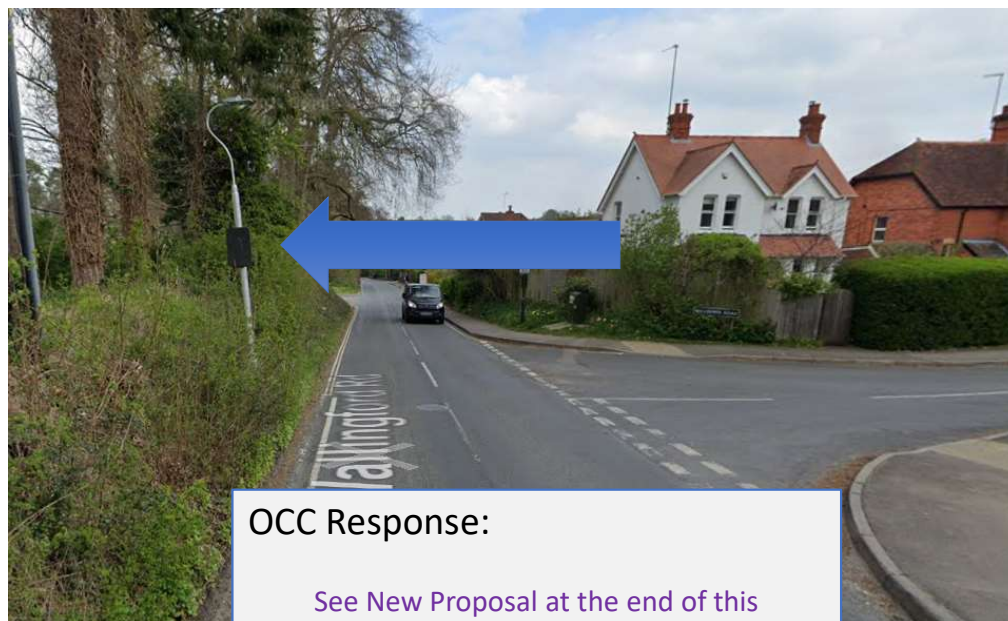
### OCC Response:

A tricky location, whilst the vegetation could be trimmed, the tall trees to the south will shade any solar panel considerably (especially with weaker, low winter sun) and not provide enough power for the unit.

NOTE: Resident has asked if a neighbour property could power this.

## Wallingford Road – Opposite Milldown Road.

Replace Current Sign – use lamp power



OCC Response:

See New Proposal at the end of this document.



## Wallingford Road – Opposite Waltham Court.

Replace Current Sign – use lamp power – add cantilever to clear bushes, which are now much larger



### OCC Response:

See New Proposal at the end of this document.

## Updated Proposal – Wallingford Road – Both Locations

### OCC Response:

Having looked at these two locations a more effective solution could be to use both of the nearby school warning sign electric flashing 'wig wag' poles and use this as opportunity to enhance the electronic school warning signs at the same time? One electronic sign supplier (Westcotec) produces a 'dual purpose sign' with some programmable logic.



The signs can be programmed to the time of day and school term dates so, for example during school drop off / pick up they could show:

For vehicles up to 20mph show the triangular children sign only

For vehicles 21 to 25 mph show the triangular children sign and the message 'slow down'

For vehicles over 25 mph show the triangular children sign and the message 'slow down' and the yellow flashing lights.

Outside of school times the unit can work to activate for vehicles speeding and show the 20 slow down and orange lights etc.

Shiplake Parish Council are just ordering one of these for their parish where it costs in the region of £5210 +VAT for each unit. This includes installation and a 6 year guarantee.

The County are happy to arrange the installation of the poles and help with the VAS / SID specifications. However, it is more cost effective for the Parish Council to procure the electronic signs directly with the manufacturer.

## Proposed Signs

Messagemaker Display sign is easily the best 'fit' for the conservation area as it ticks most of the good practice points (simple design, not visually intrusive, no bright yellow, black front and back), as long as it meets the Council's technical requirements

Propose either their SID (roving) or VAS (Permanent – SLR shown below) design.





**Summary – 20mph zone**

2-off new poles with solar power, 1 roving SID.

1-off new lamp post connection – Permanent VAS

2-off replace current sign – with permanent programable VAS to update current signs.

Total 5 locations, 3 permanent signs, 1 roving sign.

**Summary – 30mph zone**

1-off new pole powered from a resident home – to be investigated.

Total 1 locations

Proposed 1 permanent signs.

<b>Title</b>	Speed Hump – East of Social Club, High Street - Proposal to Council.
<b>Authors</b>	Assistant Clerk
<b>Meeting</b>	Traffic Management Parking and Pedestrian Safety Committee – 15 <sup>th</sup> August 2023

Whilst no formal assessment of the effect of the traffic calming on the High Street has been conducted. Observations of cars travelling up the High Street between the junctions with Cleeve Road and Wallingford Road appear to show cars speeding up considerably on this long straight section of road.

**[Proposal to Full Council]** To approve pursuing the installation of 1-off full carriageway width speed hump, similar to that outside the shop frontages, budget £9,000 for design and public consultation using Glanville Group / OCCH.

**Further back ground.** OCCH have confirmed they cannot progress a scheme such as this in FY 2023-2024 due to their current commitments to our parish

- Yellow Line Review
- Sheffield Bike Stands
- Station Road Pedestrian Priority Lane
- Speed Signs.

They have confirmed that should the parish prepare the scheme ready to consult in FY 2024-2025 they may then be able to provide the OCCH officer resource to progress the scheme further. Likely the PC will need to pay for the installation – currently unknown cost.